

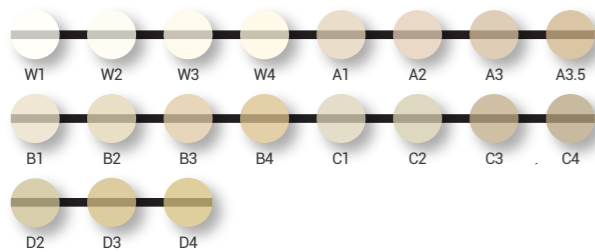


Product Line-up

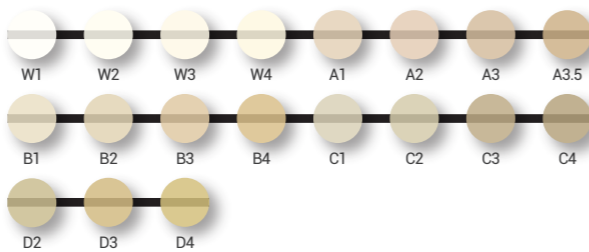
Rosetta <sup>®</sup> SM		Dimensions (mm)	Pcs / Pack
	C12	10 × 12 × 15	5 Blocks
	C14	12 × 14 × 18	
	C32	14 × 14 × 32	3 Blocks
	C40	15 × 15 × 38	
	P9808	ø98 × 8T	1 Disk
	P9810	ø98 × 10T	
	P9812	ø98 × 12T	

Available Shades

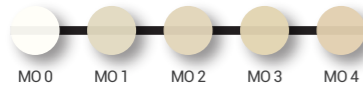
HT(High Translucency)



LT(Low Translucency)



MO(Medium Opacity)



Recommended Crystallization Schedule

PROGRAMAT<sup>1)</sup>, FOCUS<sup>2)</sup>

Stand-by temperature B [°C]	Closing time S [min]	Heating rate t <sub>1</sub> [°C]	Firing temperature T <sub>1</sub> [°C]	Holding time H <sub>1</sub> [min]	VAC1 /VAC2	Long-term cooling L [°C]	Cooling time t <sub>l</sub> [°C]
400	3:00	60	840	10:00	550/840	700	0

Please follow our recommended crystallization schedule for best results. The name of the menu on the schedule may vary depending on the furnace's model.

1) PROGRAMAT is a registered trademark of IVOCLAR VIVADENT. 2) FOCUS is a registered trademark of Shenpaz.

Note

There may be a slight difference between the displayed temperature and the actual temperature of each furnace. Before you heat-treated Rosetta<sup>®</sup> SM blocks, please verify that the above recommended schedule is suitable for the furnace being used. Otherwise, try to find the optimized crystallization temperature through the following process.

- If there are some changes in the shape of restoration during crystallization heat treatment, please reduce the final temperature by 10~15 °C.

HASS Corp.  
77-14, Gwahakdanji-ro, Gangneung-si,  
Gangwon-do, KOREA 25452  
Tel: +82-70-7712-1300~4 / Fax: +82-33-644-1231  
Customer Support : +82-2-2083-1367  
E-mail : hasscorp@hassbio.com  
Website : www.hassbio.com

Printed in KOREA © HASS Corporation. All rights reserved.

This material is designed for use by dental professionals. Follow all instructions provided in the user manual. HASS is not liable for any loss caused by failure to comply with regulations or scope of indication. Users are responsible for testing products to verify the compatibility for any usage that is not listed in the instructions. The explanations and data contained within do not carry any guarantees and/or obligations. All enclosed recommendations and restrictions apply when used with products from other manufacturers.

RM\_BR\_EN\_230412

Lithium Disilicate Glass-ceramic Blocks & Disks

# Rosetta<sup>®</sup> SM

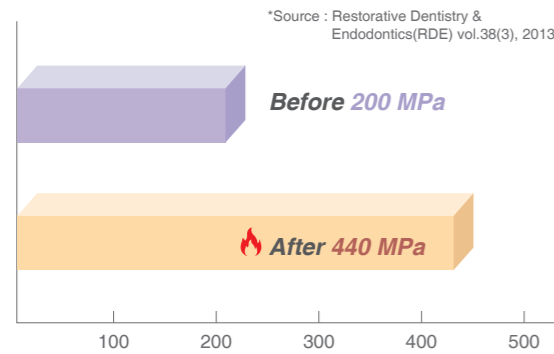


www.hassbio.com

# The Benefits of Rosetta SM for your practice

Experience the strength of Rosetta SM, with its easy and fast milling process for creating natural-looking, durable restorations.

## Strength. Easy & Fast milling process



Biaxial Flexure Strength of Rosetta SM before and after heat-treatment (MPa)

## Fracture Strength

- Cementation : Etching(5% HF/20sec) / IPS ceramic etching gel, Ivoclar vivadent\*
- Silane treatment / Monobond Plus, Ivoclar vivadent\*
- Resin cement / RelyX U200, 3M\*
- [\* Not a registered trademark of HASS Corp.]
- Test condition : Thermocycled for 10,000 cycles (5-55°C) & Fracture strength after fatigue Group : Dynamic loading for 200,000 times (70N, 1Hz, angle of 135°)

	Rosetta SM	Multi Zirconia (A company)
Fracture strength before fatigue	2250 ± 230 N	1750 ± 230 N
Fracture strength after fatigue	1820 ± 100 N	1640 ± 190 N

\* Source : The Journal of Prosthetic Dentistry, 2021

# Great Versatility!

## Innovative pioneer - Ø98 Disk

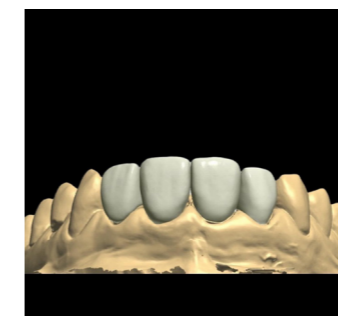


Pursuing the needs of the best glass ceramic materials for various open CAD/CAM systems.

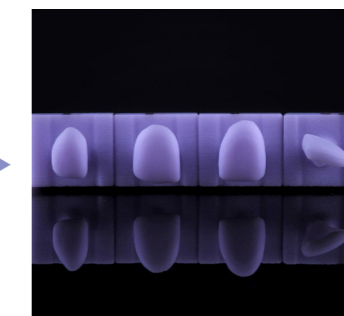
## Wide Range of Indications

	Inlays		Anterior Single Crowns
	Onlays		Posterior Single Crowns
	Veneers		3-Unit Anterior Bridge (* up to the second Premolar)

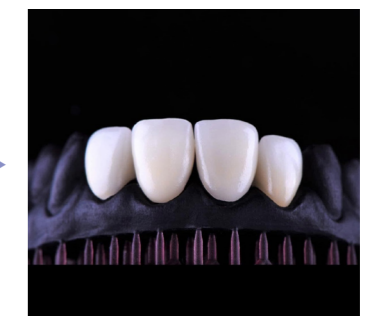
## Workflow



(1) Design



(2) Milling



(3) Stain & Glazing



(4) Cementation



(5) Final Restoration

Courtesy of Dr. Alejandro Pineda \_ Lhasa Digital Dental Clinic / 4 upper veneers

